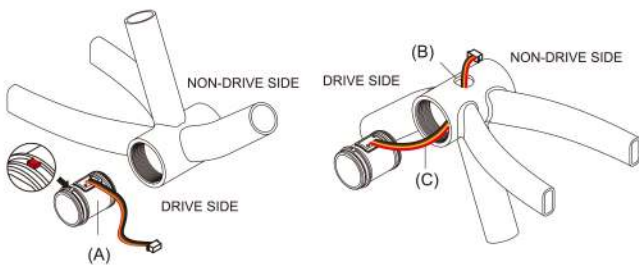


Assembly Instruction for BB Sensor "S66" 安裝說明

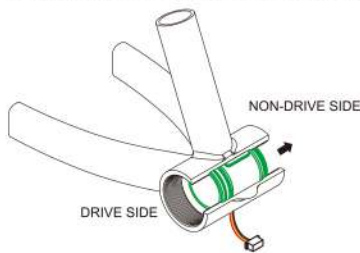
- 1-1. 確認車架五通管規格為BC 1.37"x 24T(L)。
 - 1-2. 確認溝槽中管(A)的方向性。
 - 1-3. 將溝槽中管電線由齒盤端(右腳端)，穿過五通管的電線孔(B)。
- 穿插時不得過度擠拉電線(C)，避免電線絕緣膜受損或不當壓迫造成功能失效。

- 1-1. Make sure the specification of the BB shell for the frame is BC 13.7" x 24T (L).
- 1-2. Pay attention to the direction of the sleeve (A).
- 1-3. Pull the cable (C) through the hole on the BB shell of the frame from the drive side. Please be careful and do not press or pull the cable excessively to prevent damage for insulating film on the cable which might lose the efficacy.



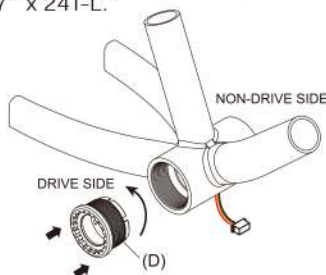
2. 將溝槽中管置入五通管中，置入時應同時輕拉電線，使其置於五通管中央偏左位置，以避免左牙碗旋入時，帶動溝槽中管造成損害。

Install the sleeve into the BB shell of the frame and slightly pull to adjust the cable at the same time. Deviate the sleeve to the non-drive side from the center. If the sleeve rotates together with the drive side adapter while installing the drive side adapter, the sleeve might be damaged.



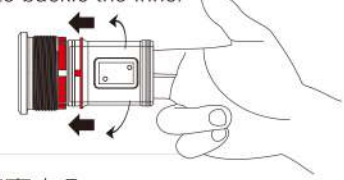
3. 以逆時針方向旋入左牙碗(D)於五通中旋緊貼齊。
- 注意：左牙碗為左牙(BC 1.37"x 24T-L)。

Counterclockwise tighten the drive side adapter (D) into the BB shell of the frame.
Note: The thread for the drive side adapter is "BC 1.37" x 24T-L."



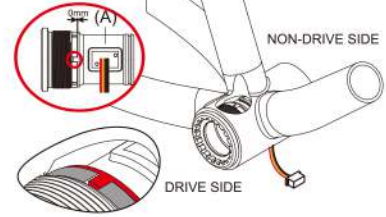
- 4-1. 合併食指、中指扣住溝槽中管(A)的内孔。
- 4-2. 左右微旋並同時微壓推入。

- 4-1. Draw close the index finger to the middle finger and use them to buckle the inner hole of the sleeve.
- 4-2. Slightly turn the sleeve and press it into the drive side adapter.



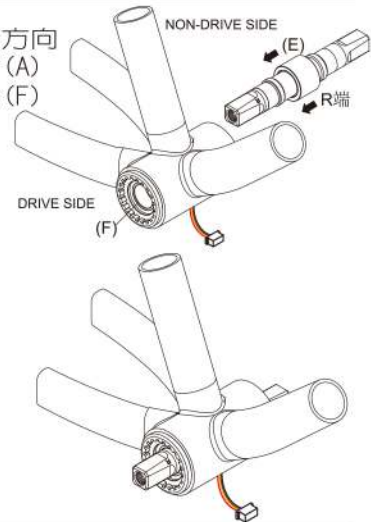
5. 溝槽中管(A)須確實卡入溝槽，貼齊固定。

Make sure the sleeve (A) be installed into the groove firmly and evenly.



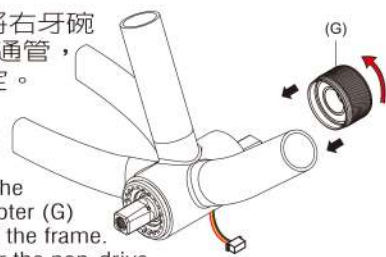
6. 選中天心(E)R端方向，插入溝槽中管(A)貼合左牙碗軸承(F)端面。

Install the R side of axle (E) into the sleeve (A) and lean it again the bearing (F) inside.



7. 以順時針方向將右牙碗軸承(G)旋入五通管，並確實鎖緊固定。
- 注意：右牙碗為(BC 1.37"x 24T)

Clockwise tighten the non-drive side adapter (G) into the BB shell of the frame.
Note: The thread for the non-drive side adapter is "BC 1.37" x 24T."



8. 組裝完成。

Assembly is completed.

