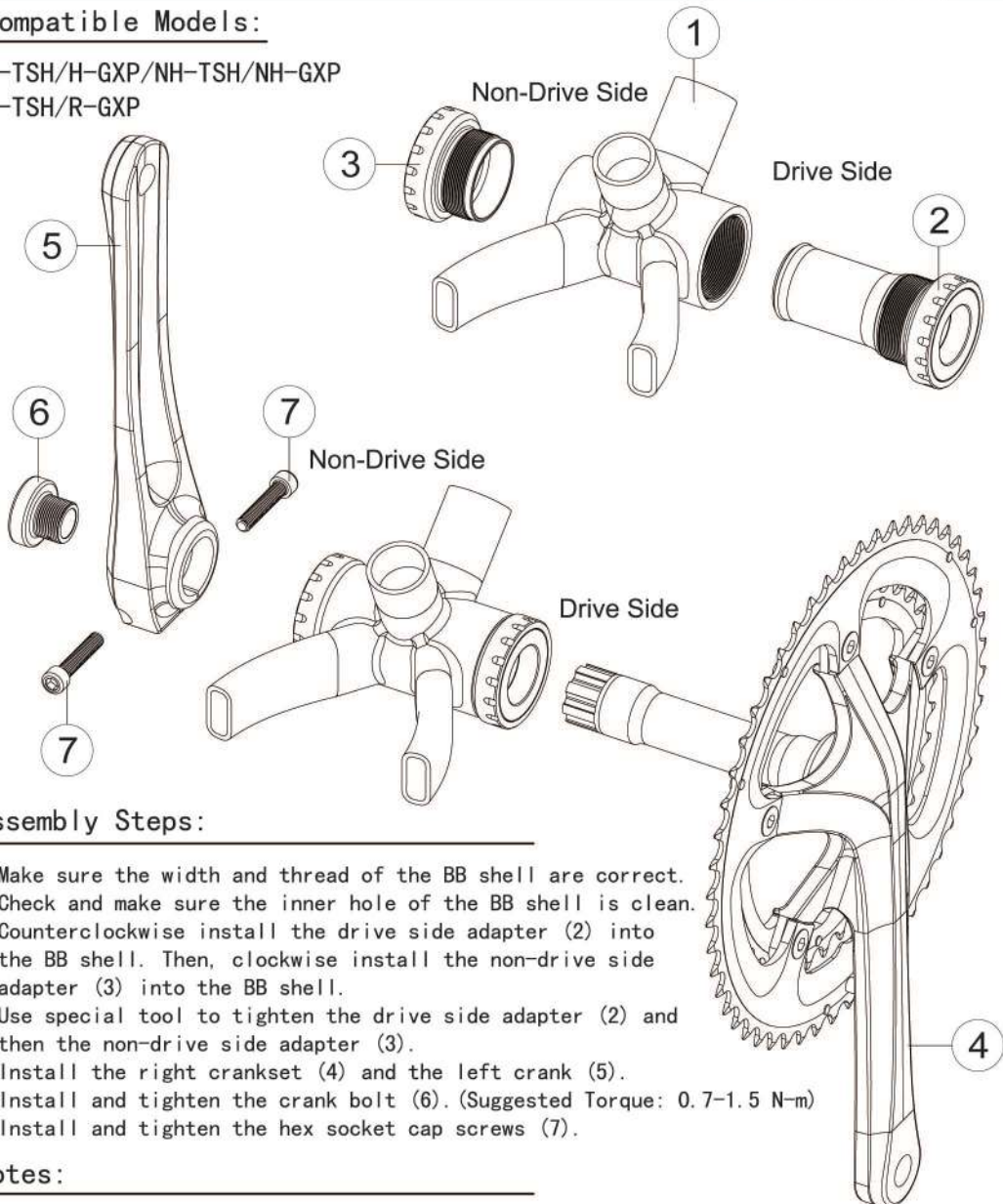


# Assembly Instruction for Bottom Brackets



## Compatible Models:

H-TSH/H-GXP/NH-TSH/NH-GXP  
R-TSH/R-GXP



## Assembly Steps:

1. Make sure the width and thread of the BB shell are correct.
2. Check and make sure the inner hole of the BB shell is clean.
3. Counterclockwise install the drive side adapter (2) into the BB shell. Then, clockwise install the non-drive side adapter (3) into the BB shell.
4. Use special tool to tighten the drive side adapter (2) and then the non-drive side adapter (3).
5. Install the right crankset (4) and the left crank (5).
6. Install and tighten the crank bolt (6). (Suggested Torque: 0.7-1.5 N-m)
7. Install and tighten the hex socket cap screws (7).

## Notes:

1. The suggested tightening torque for adapters (2) & (3) is 35-45 N-m.
2. If the adapters (2) & (3) are with Nyloc, the Nyloc is disposable for assembly.



No. 45, Kung 9th Rd., Rinan Vil., Tachia Dist., Taichung 43769, Taiwan  
TEL: +886-4-26815039 FAX: +886-4-26815917  
sales@firstcomponents.com www.firstcomponents.com